



# ROSS Module Summary

## Request Status

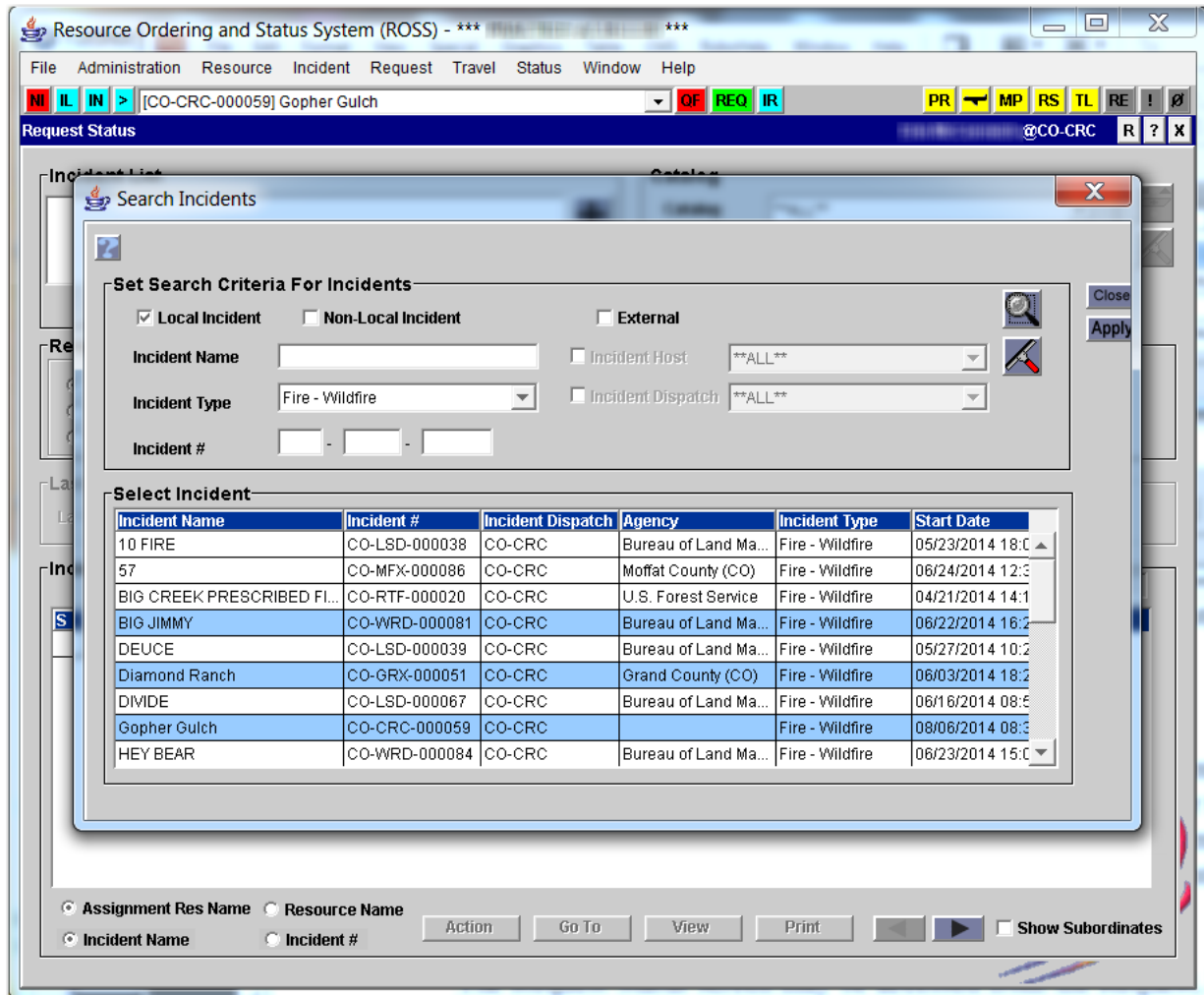


Figure 1. Filter to view the Request Status for selected incident(s)

## Description

The Request Status module is used to filter and view the current status of selected incident requests. It can be used to determine the status of an individual request or to provide information on groups of requests for briefings or shift changes. For example, on a given incident a Dispatcher can quickly display all pending requests for crews, all crews at the incident, and all crews with a tentative release schedule.

The Request Status screen may be accessed from the Request > Request Status, or Status > Request Status menus. It may also be accessed by clicking the **RS** button. As shown in Figure 1, various filters may be applied to refine the search. These include local or non-local incidents. A dispatch center may view the status of requests on a non-local incident if the center was in the



# ROSS Module Summary

## Request Status

ordering chain for the request. Other filters include incident name, type, number, host, and dispatch. As shown in Figure 2, the Request Status screen displays once the incident(s) is selected. Requests may be filtered by Catalog, Category or Catalog Item. The default is "All."

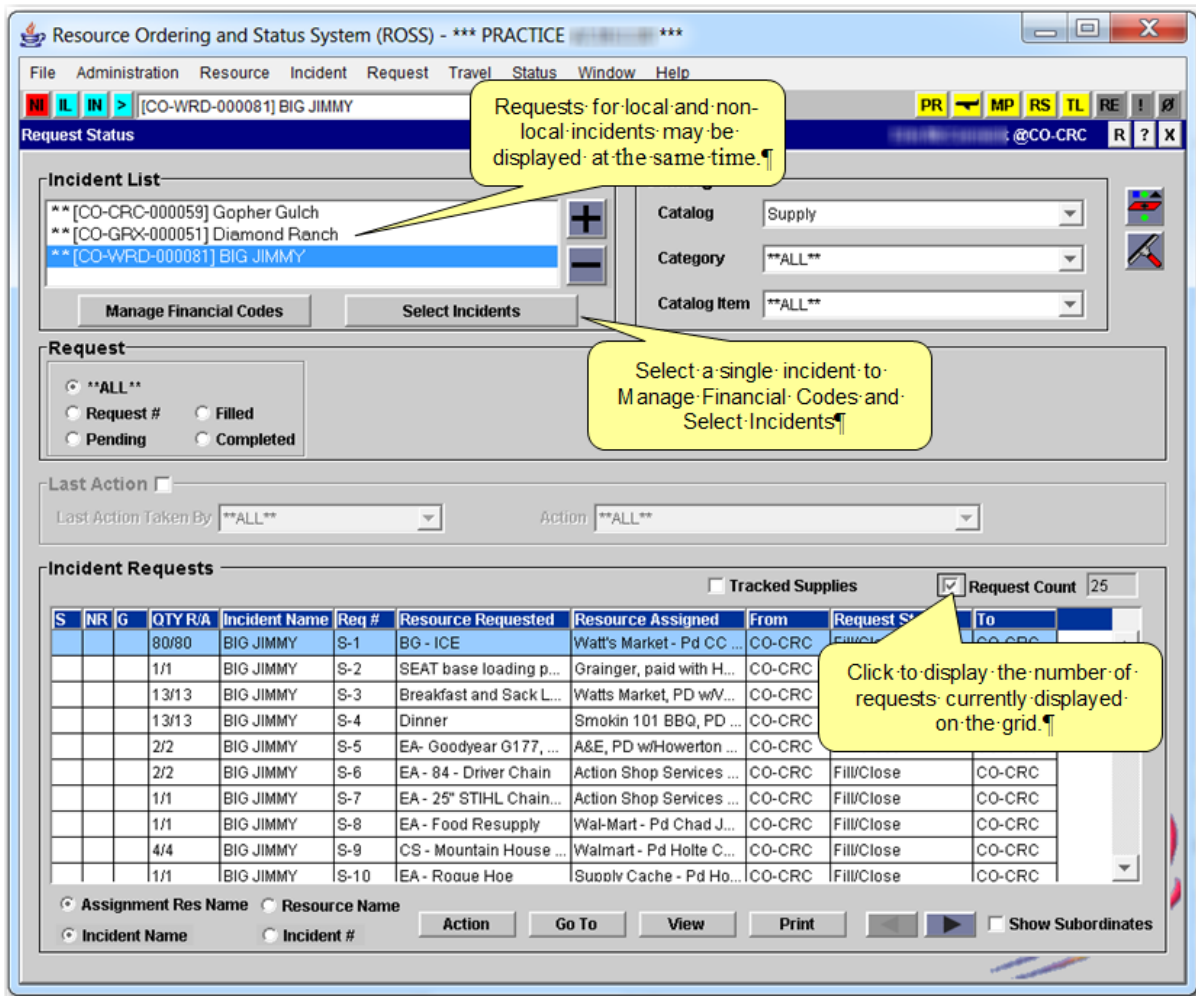


Figure 2. Request Status screen

As shown in Figure 3, the Request Status screen can display all requests, a specific request number or requests that are pending, filled or completed. Additional fields, check boxes, and/or drop-down arrows become available based on the selected Request option button.



# ROSS Module Summary

## Request Status

Request

\*\*ALL\*\*  
 Request #  
 Pending

Filled  
 Completed

Filled By:

Show All     Reserved

Mob En Route     Released (At Incident)  
 At Incident     Reassigned (At Incident)  
 Tentative Release     Demob En Route

Named Request Only

Figure 3. Request option buttons

ROSS displays all requests that meet the filter criteria and allows the Dispatcher to take action on requests, view information about them, or print the Resource Order, Request List, and Assignment Roster.

The “Last Action” check box allows users to filter by the dispatch center that performed the most recent specified action, for example, all requests where the last action by the GACC was UTF. The default is “All” units and “All” actions. Before the Last Action Taken By and Action options are available, the user must select the Last Action check box. Figure 4 shows the Last Action check box selected and the Last Action Taken By and Action drop-down arrows. In this example, the Incident Requests grid shows the Last Action Taken By “Craig Interagency Dispatch Center” and the Action “Fill.”

Last Action

Last Action Taken By:     Action:

Incident Requests  Request Count

S	NR	G	QTY R/A	Incident Name	Req #	Resource Requested	Resource Assigned	From	Request Status	To
			1/1	BIG JIMMY	0-1	TECHNICAL SPECIAL...	...	CO-CRC	Filled	CO-CRC
	*		1/1	BIG JIMMY	0-3	ENGINE BOSS (ENGB)	...	CO-CRC	Filled	CO-CRC

Figure 4. Last Action

The Request Status module is related to the Tactical Aviation, Incident, New Request, Pending Request, Quick Fill, Resource Status, Incident Resources, and Travel modules.



# ROSS Module Summary

## Request Status

### Data Information

Data Element	Data Definition
Select Incident(s)	The incident(s) for which the user wishes to view requests. Filters for local, non-local, name, type, number, host, and host dispatch. Plus and minus buttons allows the current incident list to be updated.
Select Filter for Catalog	Requests may be filtered by catalog, category or requested item. The default is "ALL."
Request	Option buttons are used to display all requests, a specific request number or requests that are pending, filled or completed. Additional fields, check boxes, and/or drop-down options become available based on the selected option button.
Last Action <i>check box</i>	Check box that allows the user to filter by dispatch center and/or by Last Action Taken. The default is "ALL."
Action <i>button</i>	Allows users to select a request and either Create Support Request, Edit Assignment, Edit Request +, View/Add Documentation, Cancel UTF Request +, or Restore Request +.
Go To <i>button</i>	Allows users to select a request and go directly to the pertinent Incident screen or the same request on the Pending Request, Incident Resources, Travel, Resource Status or Release Resources (Non Local) screens.
View <i>button</i>	Allows users to select a resource and view the Incident, Request or Requesting Unit.
Show Subordinate Requests <i>check box</i>	Check box used to display subordinate requests for a selected resource that has a configuration, such as CRWB, FFT1s and FFT2s for a crew. Action may then be taken on one or more subordinate requests without affecting the parent or other subordinates, such as to release one crewmember.