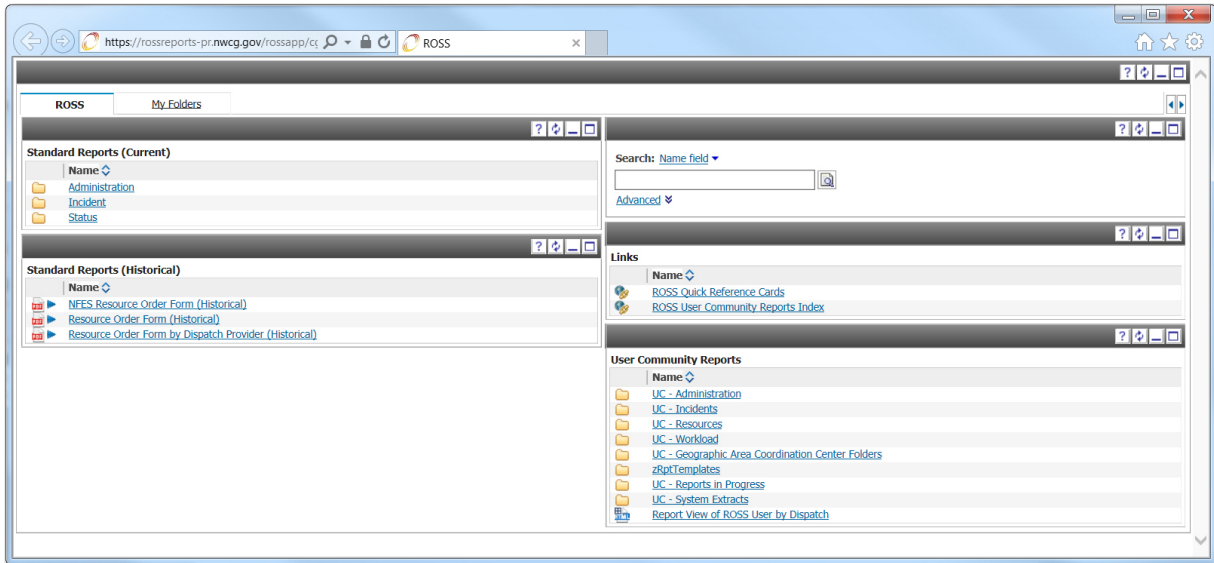




ROSS Module Summary

Reports



Description

The Reports module provides access to the ROSS Reports Portal Page and allows the user to run reports using data stored in the ROSS database. The Reports module allows the user to filter information so that reports may be tailored to meet specific needs. Once the report has been generated, it may be printed or exported and saved. New reports are added on a periodic basis.

The Reports module is also used to administer and maintain the base data entered into ROSS, including base data for Organizations, Locations, and Resources. This module also allows the user to check the availability of resources and access information about current incidents and resources currently on assignment. Lastly, this module provides statistical information for incidents that are closed, and for resources that have returned from assignment.

Users may access the Reports module from the Administration menu in the ROSS application, or outside of ROSS by opening an Internet Explorer web browser and typing <http://rossreports.nwcg.gov/cognos/cgi-bin/cognos.cgi> in the Address bar. The primary users of this module are Dispatchers and Basic Users, and managers who have been provided privileges in ROSS that includes the Reports module.

The relationship of the Reports module to the other modules in ROSS is purely informational. That is, other ROSS modules provide the data from which the Reports module draws.



ROSS Module Summary

Reports

Report Descriptions

Report Folder	Contains
Standard Reports (Current)	<ul style="list-style-type: none">Administration: Reports used to facilitate management of a dispatch center's resource items and the catalog listings.Incident: Reports used to facilitate management of an incident and assigned resources.Status: Report providing detailed and summary information on status of resources as maintained in ROSS.
Standard Reports (Historical)	<ul style="list-style-type: none">Historical, that is, multi-year versions of the Resource Order form, NFES Resource Order form and the Resource Order form by Dispatch Provider reports.
Links	<ul style="list-style-type: none">Obtain information about Analytical ReportsROSS Reports User Guide. Opens the ROSS Reports User Guide that explains how to run Standard and User Community Reports available in ROSS Reports via the ROSS Reports PortalROSS User Community Reports Index. Opens a pdf document identifying Report titles, descriptions and sample formats of ROSS User Community Reports.
User Community Reports	UC - Administration - <i>folder</i> UC - Incidents - <i>folder</i> UC - Resources - <i>folder</i> UC - Workload - <i>folder</i> UC - Geographic Area Coordination Center Folders zRptTemplates - <i>folder</i> UC - Reports in Progress - <i>folder</i> UC - System Extracts - <i>folder</i> Report View of ROSS User by Dispatch - <i>folder</i>