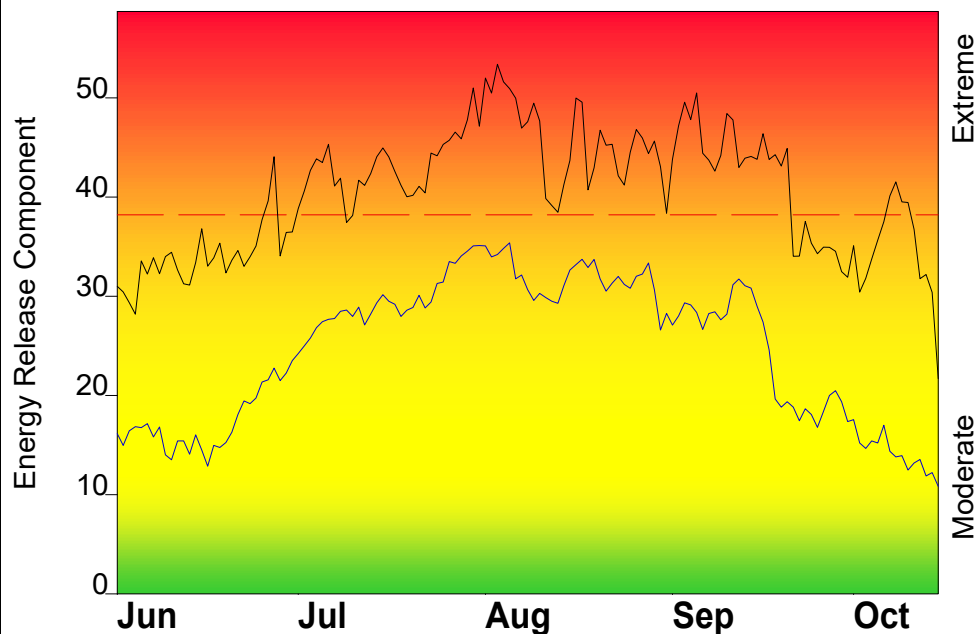


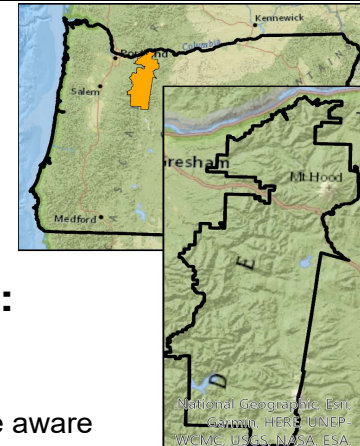
# FIRE DANGER -- North Oregon Cascades

Maximum, Average, and 90th Percentile, based on 15 years data



## Fire Danger Area:

- North Oregon Cascades
- Fire Wx Zones 607 & 608
- Boulder & Redbox
- \* Meets NWCG Wx Station Standards



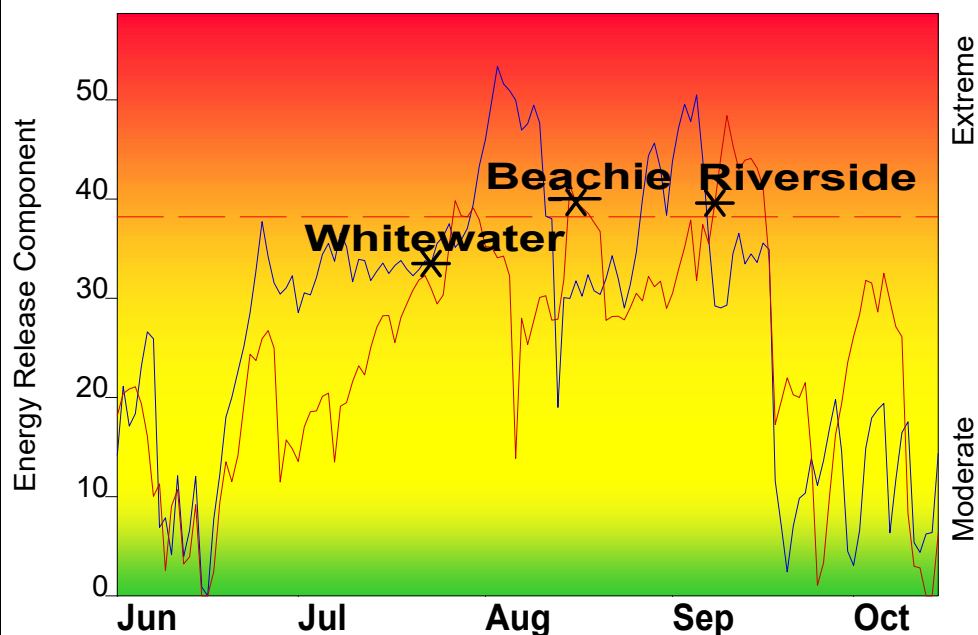
## Fire Danger Interpretation:

- EXTREME** -- Use extreme caution
- High** -- Watch for change
- Moderate** -- Lower Potential, but always be aware
- Maximum -- Highest Energy Release Component by day for 2006 - 2020
- Average -- shows peak fire season over 15 years (2054 observations)
- 90th Percentile -- 10% of the 2054 days from 2006 - 2020 had an Energy Release Component above 38

## Local Thresholds - Watch out:

- Combinations of any of these factors can greatly increase fire behavior:
- 20' Wind Speed over 10 mph, RH less than 30%, Temperature over 75, 100-Hour Fuel Moisture less than 14

## Years to Remember: 2017 2020



Fuel Model: Y - Timber (2016)

## Remember what Fire Danger tells you:

- ✓ Energy Release Component gives seasonal trends calculated from 2 pm temperature, humidity, daily temperature & rh ranges, and precip duration.
- ✓ Wind is NOT part of ERC calculation.
- ✓ Watch local conditions and variations across the landscape -- Fuel, Weather, Topography.
- ✓ Listen to weather forecasts -- especially WIND.

## Past Experience:

- East Wind Events/ Thermal Trough: high temps, low RH with poor recovery, rapid drying of fuels, increase wind and gust speed, and instability
- Haines 5 or 6 can lead to rapid fire spread
- Lichen draped fuels become available near 35% RH, increasing likelihood of canopy fire
- Topographic features that funnel winds

Fire	Date	Acres	Temp	RH %	ERC	100 HR FM %
Whitewater	7/13/2017	11513	85	35	32	15
Beachie Ck*	8/16/2020	193573	85	42	39	12
Riverside	9/8/2020	138054	64	19	39	14

\*Growth primarily occurred on 9/7-8

Responsible Agency: USFS FF+5.0 build 20191211 06/09/2021-08:40

Design by NWCG Fire Danger Working Team