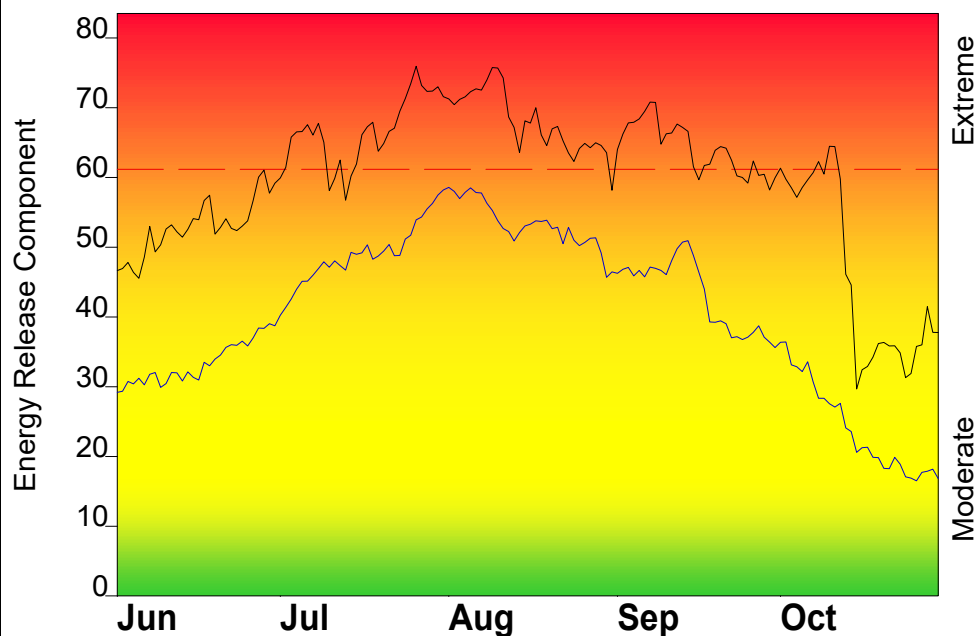


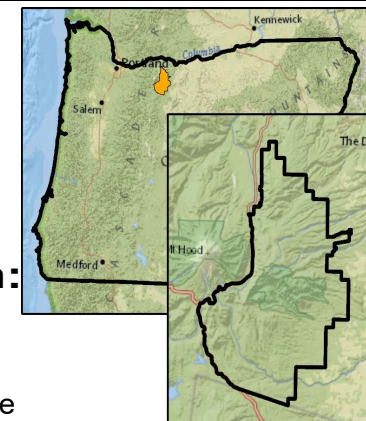
## FIRE DANGER -- Mt Hood East

Maximum, Average, and 90th Percentile, based on 15 years data



## Fire Danger Area:

- Mt Hood East
- Fire Wx Zone OR 639
- Pollywog & Wamic
- \* Meets NWCG Wx Station Standards



## Fire Danger Interpretation:

**EXTREME** -- Use extreme caution

**High** -- Watch for change

**Moderate** -- Lower Potential, but always be

Maximum -- Highest Energy Release Component by day for 2006 - 2020

Average -- shows peak fire season over 15 years (2279 observations)

90th Percentile -- 10% of the 2279 days from 2006 - 2020 had an Energy Release Component above 61

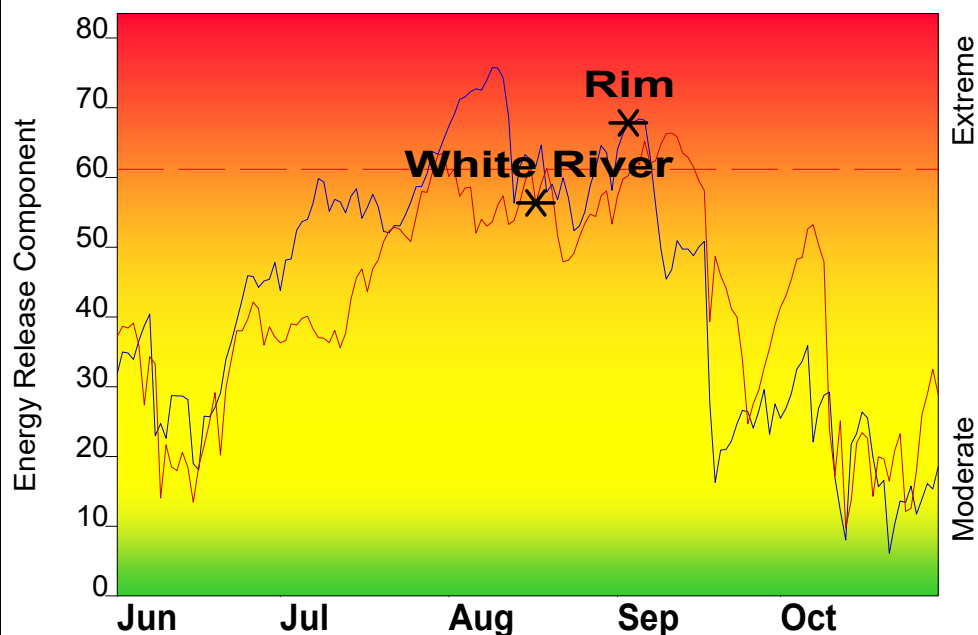
## Local Thresholds - Watch out:

Combinations of any of these factors can greatly increase fire behavior:

**20' Wind Speed** over 10 mph, **RH** less than 30%,

**Temperature** over 85, **100-Hour Fuel Moisture** less than 9

## Years to Remember: 2017 2020



Fuel Model: Y - Timber (2016)

## Remember what Fire Danger tells you:

- ✓ Energy Release Component gives seasonal trends calculated from 2 pm temperature, humidity, daily temperature & rh ranges, and precip duration.
- ✓ Wind is NOT part of ERC calculation.
- ✓ Watch local conditions and variations across the landscape -- Fuel, Weather, Topography.
- ✓ Listen to weather forecasts -- especially WIND.

## Past Experience:

- East Wind Events/ Thermal Trough: high temps, low RH with poor recovery, rapid drying of fuels, increase wind and gust speed, and instability
- Haines 5 or 6 can lead to rapid fire spread
- Lichen draped fuels become available near 35% RH, increasing likelihood of canopy fire
- Topographic features that funnel winds
- Down slope winds and downhill fire spread

Fire	Date	Acres	Temp	RH %	ERC	100 HR FM %
Rim	9/3/2017	237	95	18	67	8
White River	8/17/2020	17442	92	29	56	9

Responsible Agency: USFS FF+5.0 build 20191211 06/09/2021-07:16

Design by NWCG Fire Danger Working Team