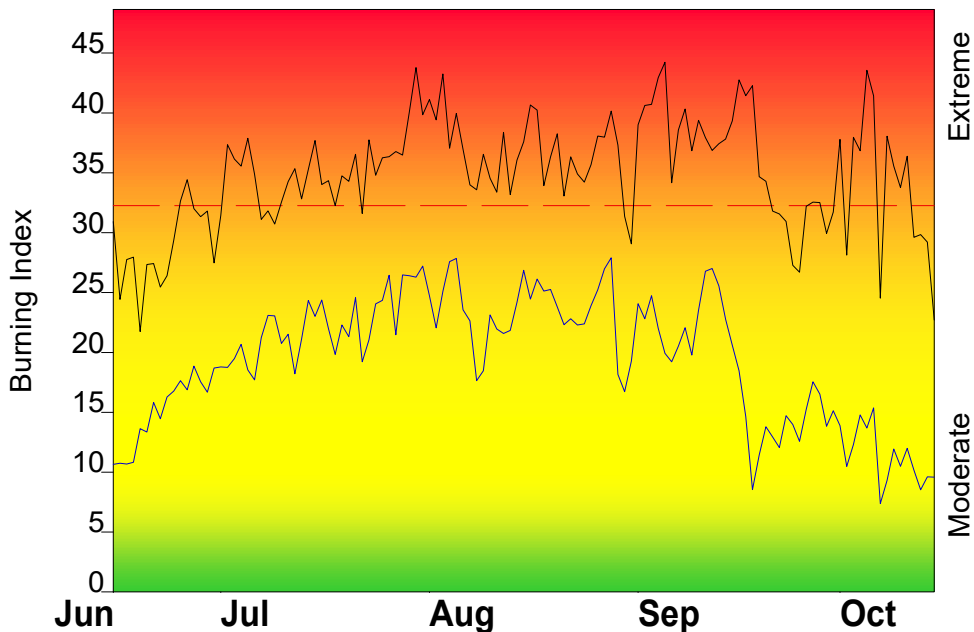


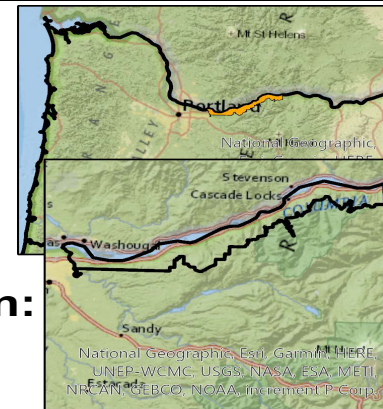
# FIRE DANGER -- Gorge West

Maximum, Average, and 90th Percentile, based on 15 years data



# Fire Danger Area:

- Gorge West
- Fire Wx Zone OR607
- Log Creek
- \* Meets NWCG Wx Station Standards



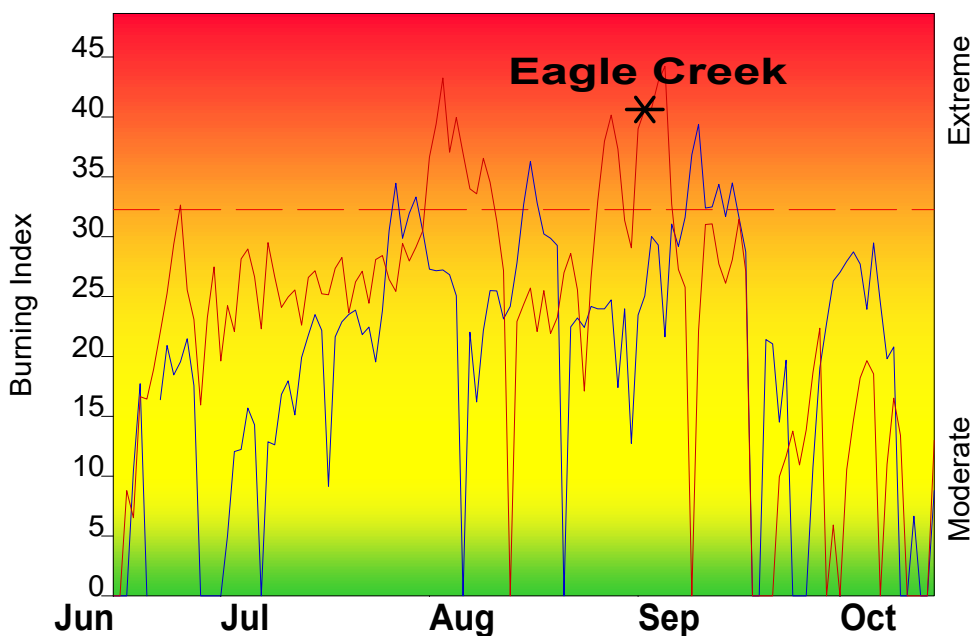
# Fire Danger Interpretation:

- EXTREME** -- Use extreme caution
  - High** -- Watch for change
  - Moderate** -- Lower Potential, but always be aware
- Maximum -- Highest Burning Index by day for 2006 - 2020
- Average** -- shows peak fire season over 15 years (1763 observations)
- 90th Percentile** -- 10% of the 1763 days from 2006 - 2020 had an Burning Index above 32

# Local Thresholds - Watch out:

Combinations of any of these factors can greatly increase fire behavior:  
**20' Wind Speed** over 10 mph, **RH** less than 30%,  
**Temperature** over 75, **100-Hour Fuel Moisture** less than 14

# Years to Remember: 2020 2017



**Eagle Creek**

\*

Fuel Model: Y - Timber (2016)

# Remember what Fire Danger tells you:

- ✓ Burning Index gives day-to-day fluctuations calculated from 2 pm temperature, humidity, wind, daily temperature & rh ranges, and precip duration.
- ✓ Wind is part of BI calculation.
- ✓ Watch local conditions and variations across the landscape -- Fuel, Weather, Topography.
- ✓ Listen to weather forecasts -- especially WIND.

# Past Experience:

- East Wind Events/ Thermal Trough: high temps, low RH with poor recovery, rapid drying of fuels, increase wind and gust speed, and instability
- Haines 5 or 6 can lead to rapid fire spread
- Lichen draped fuels become available near 35% RH, increasing likelihood of canopy fire
- Topographic features that funnel winds

Fire	Date	Acres	Temp	RH %	BI	100 HR FM %
Eagle Creek	9/2/2017	48488	94	20	40	12

Responsible Agency: USFS

FF+5.0 build 20191211 06/09/2021-07:33 (C:\Users\jas...\gorgeTDPocketCard

Design by NWCG Fire Danger Working Team