

ROSS Version 2.3.1 Release Notes

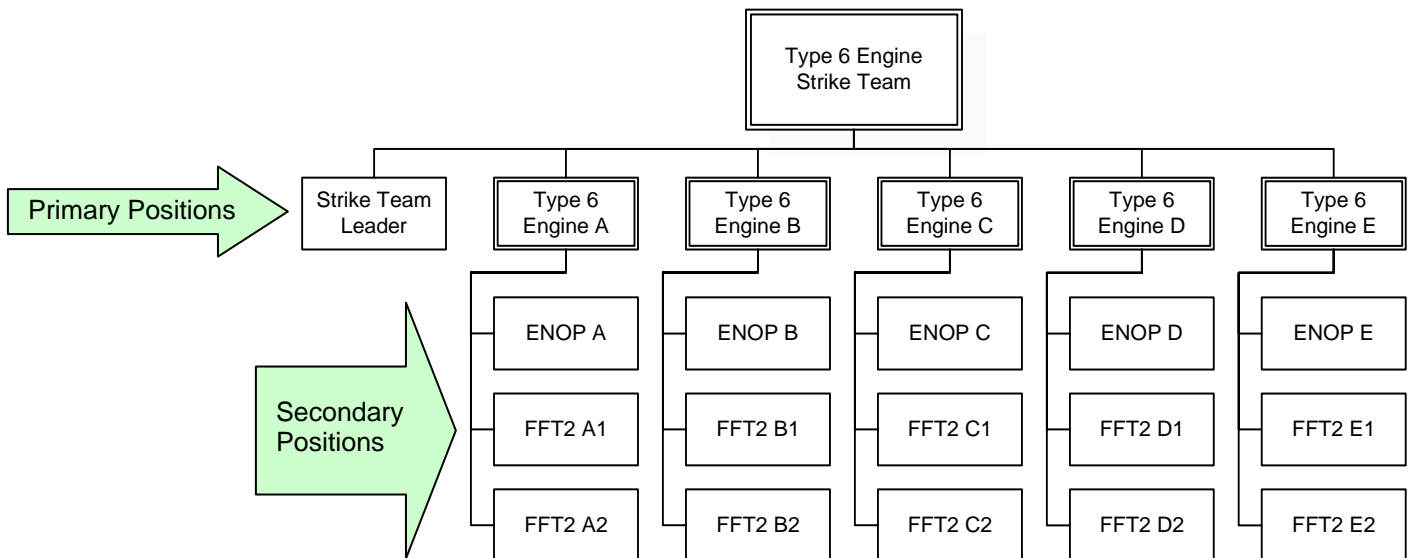
This is a synopsis of the fixes and changes to functionality included in the ROSS maintenance release 2.3.1.

Provider Enabled for Transferred Imported Overhead

When the managing dispatch center for an imported overhead record was changed (i.e., the resource was transferred) the Pick Provider field was disabled. This prevented the transfer from being completed and the resource from being dispatched. This has been corrected. The Body Weight and Employment Status fields have also been enabled for all imported overhead records.

Nested Assignment Rosters

Issues with nested assignment roster functionality are addressed in this release. The changes relate to secondary positions on the nested roster. A Type 6 Engine Strike Team will be used to illustrate. The strike team is a group of groups. The roster for the strike team has positions for five Type 6 Engines and a Strike Team Leader ~ referred to as primary positions (see diagram below). Each of the Type 6 Engines may have its own roster with positions for an Engine Operator and two Firefighters ~ these are the secondary positions.



In general, users may not add secondary positions to an assignment roster position that has a **non-local resource** assigned. These positions may be added by the dispatch center that manages the non-local resource when they fill the pending request created for the primary position. Users are permitted to add secondary positions if the non-local resource assigned to the primary position is already committed to a local incident and its status is mob en route, at incident, tentative release, reassigned at incident or released at incident. Users may also add secondary positions to an assignment roster when **no resource** is assigned to the primary position or when a **local resource** has been assigned.

Users are also generally restricted from using a non-local resource's master roster or configuration when assigning the resource to a position on a nested roster. The master roster or configuration may only be used when the non-local resource assigned to the primary position is already committed to a local incident and its status is mob en route, at incident, tentative release, reassigned at incident or released at incident.

When swapping a resource in a primary position *that already has secondary positions* with a **local resource** that has a master roster, users may choose to add all the positions and resources from the roster. If the local resource has a configuration but no roster, users may choose to add all of the positions in the configuration.

In general, when users swap a resource in a primary position *that already has secondary positions* with a **non-local resource**, all the secondary positions will be deleted. These positions may be added by the dispatch center that manages the non-local resource when they fill the pending request created for the primary position. However, if the non-local resource is already committed to a local incident (with a status of mob en route, at incident, tentative release, reassigned at incident or released at incident), users have the option to swap with just the resource (leaving the original secondary positions and assigned resources intact), with the resource and its master roster or with the resource and its configuration positions.

Users are permitted to remove a resource from a primary position that has secondary positions under it. All the secondary positions will be deleted. Users are given the option to continue or cancel this operation.

Reset Subordinate's Passwords

Account Managers were not able to consistently reset locked passwords for users at subordinate dispatch centers (via the Reset Subordinate Passwords button). This issue has been corrected.

Exclusive Use Counts on Other Resources Tab

Vendor-owned resources on Exclusive Use (EXU) contracts were not being included in the counts on the Other Resources tab when the 'Government Controlled' radio button was selected. Only government-owned EXU resources were being counted. This has been corrected.

Edit Request

Editing a Supply Service or Supply Non-Service request of the Fill / Close type (i.e., the resource is not tracked via mob and demob travel) caused the status of the resource to be set to Reserved. Neither the request nor its related incident could be closed. This has been fixed.

Web Status Remarks

Web Status users who entered and saved a Remark received the error "Cannot insert NULL into ("SPERF23"."DOC"."PERSON_NAME)". This has been fixed.

Notification

When notifications were selected from the grid on the Action Notifications screen, the full text of the message was not being displayed in the Message panel. This has been corrected.

Some dispatch centers were receiving Action and No Action notifications for requests when they were not in the notification chain for the request. This occurred even when their notification preferences were set to exclude these messages. This has been fixed.

Request Contact on Quickfill Reassignment

When users reassign multiple resources to a local or non-local incident via the Quick Fill Reassignment option, the Request Contact on the new requests should be set to 'No Contact – Reassignment (Quickfill)'. Instead, the Request Contact, which is a required field, was being left blank which creates problems on the Edit Request screen. This has been corrected so that the Request Contact field is correctly filled.

Reports

The new Merge Incidents report was not working properly. This has been resolved.