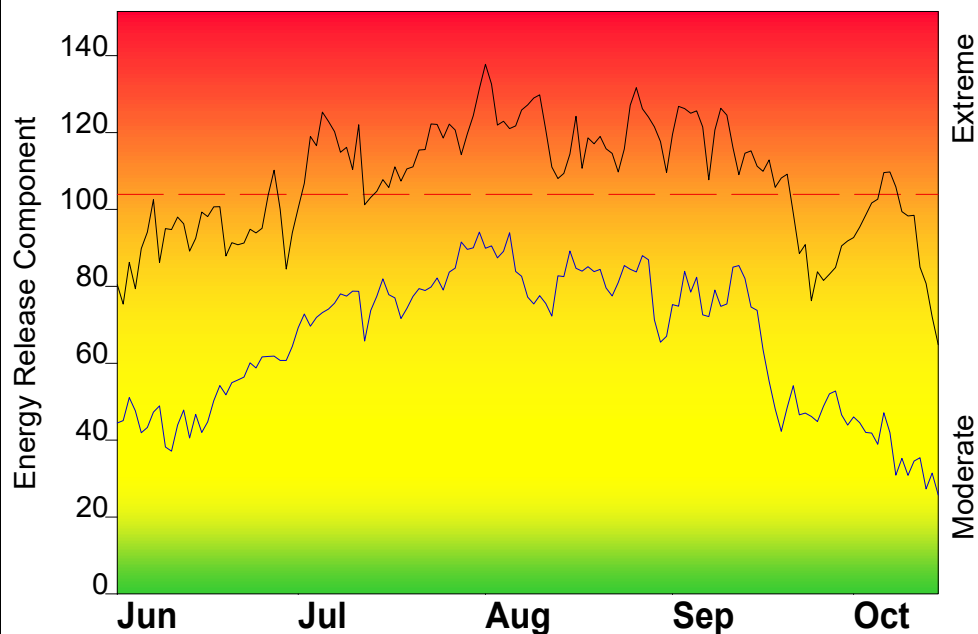


# FIRE DANGER -- Upper White Salmon

Maximum, Average, and 90th Percentile, based on 15 years data



# Fire Danger Area:

- Upper White Salmon
- WA FWZ 663
- Buck Creek

\* Meets NWCG Wx Station Standards



## Fire Danger Interpretation:

**EXTREME** -- Use extreme caution

**High** -- Watch for change

**Moderate** -- Lower Potential, but always be aware

**Maximum** -- Highest Energy Release Component by day for 2006 - 2020

**Average** -- shows peak fire season over 15 years

(2055 observations) **90th Percentile** -- 10% of the 2055 days from 2006 - 2020

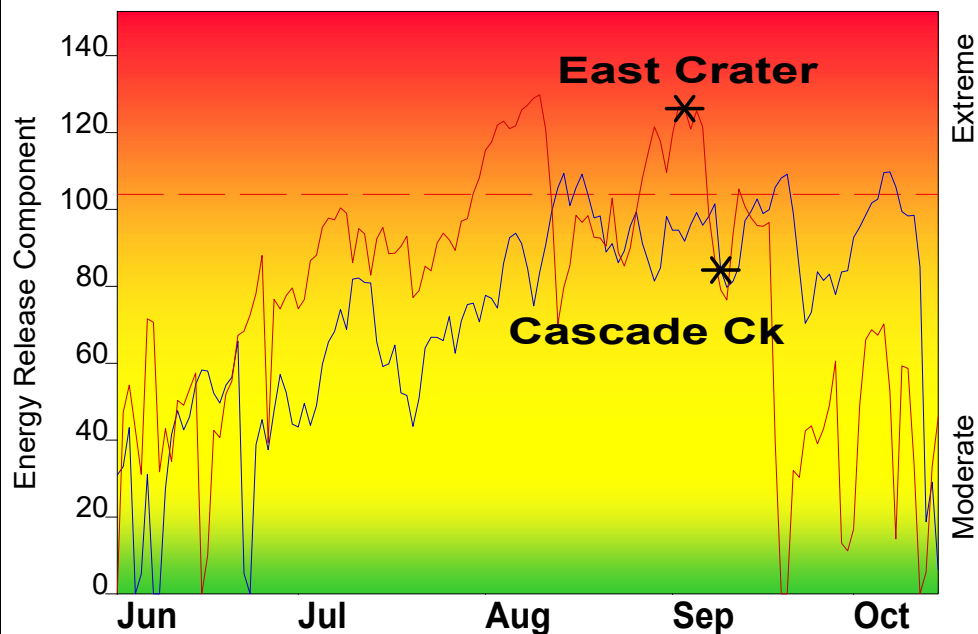
had an Energy Release Component above 104

**Local Thresholds - Watch out:** Combinations of any of these factors can greatly increase fire behavior:

**20' Wind Speed** over 10 mph, **RH** less than 30%,

**Temperature** over 80, **100-Hour Fuel Moisture** less than 12

## Years to Remember: 2012 2017



**Fuel Model: Z - Slash/Blowdown (2016)**

## Remember what Fire Danger tells you:

- ✓ Energy Release Component gives seasonal trends calculated from temperature, humidity, daily temperature & rh ranges, and precip duration.
- ✓ Wind is NOT part of ERC calculation.
- ✓ Watch local conditions and variations across the landscape -- Fuel, Weather, Topography.
- ✓ Listen to weather forecasts -- especially WIND.

## Past Experience:

-East Wind Events/ Thermal Trough: high temps, low RH with poor recovery, rapid drying of fuels, increase wind and gust speed, and instability

-Haines 5 or 6 can lead to rapid fire spread

-Lichen draped fuels become available near 35% RH, increasing likelihood of canopy fire

| Fire        | Date       | Acres | Max Temp | Min RH | ERC | 100 Hr FM% |
|-------------|------------|-------|----------|--------|-----|------------|
| Cascade Ck  | 09/09/2012 | 20296 | 83       | 20     | 84  | 12         |
| East Crater | 09/03/2017 | 483   | 98       | 8      | 126 | 10         |

Responsible Agency: USFS

FF+5.0 build 20210317 06/03/2022-08:50 (C:\Users\ja... \WWA\_SWCA\_UPWS)

Design by NWCG Fire Danger Working Team