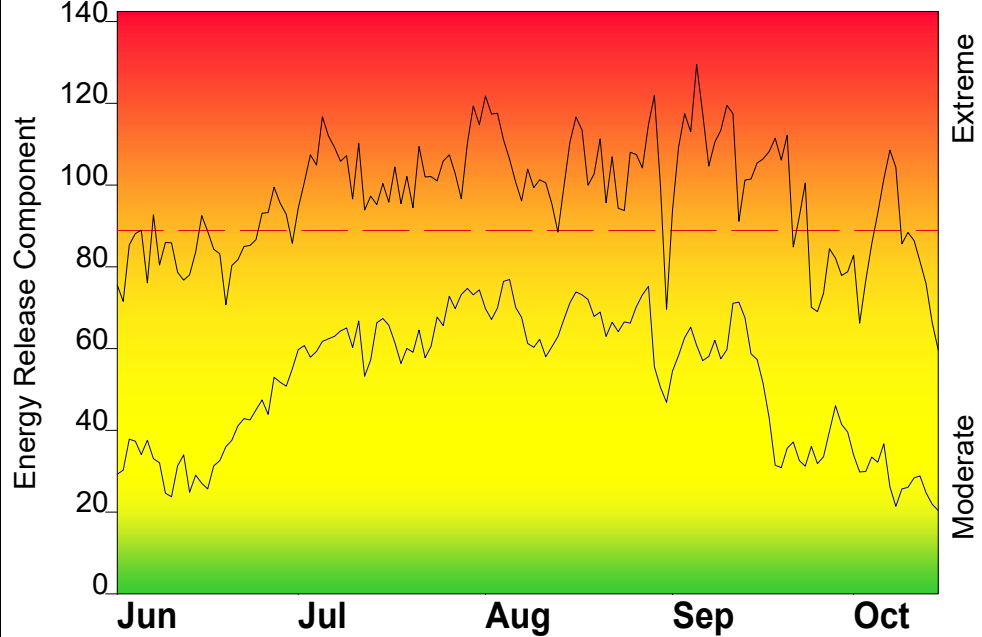


# FIRE DANGER -- South Washington Cascades

Maximum, Average, and 90th Percentile, based on 15 years data



# Fire Danger Area:

- South Washington Cascades
- WA 659 & WA 660
- Dry Cr, Hager, & Orr Cr



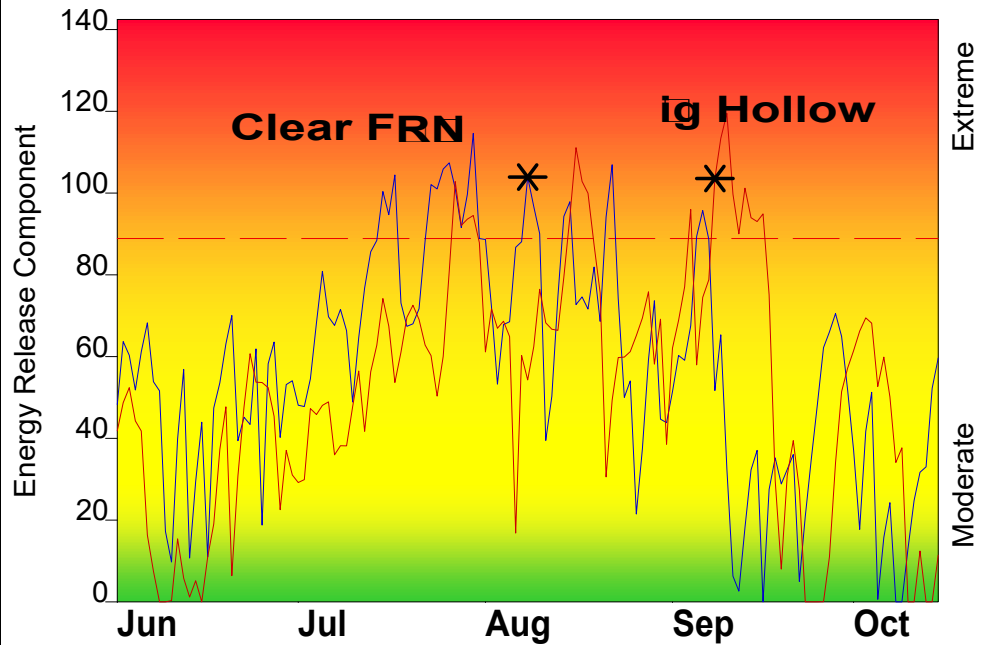
# Fire Danger Interpretation:

- EXTREME** -- Use extreme caution
- High** -- Watch for change
- Moderate** -- Lower Potential, but always be aware
- Maximum** -- Highest Energy Release Component by GD for 2006 - 2020
- Average** -- shows peak fire season over 15 years (2055 observations)
- 90th Percentile** -- 10% of the 2055 days from 2006 - 2020 had an Energy Release Component above 89

# Local Thresholds - Watch out:

- RID
- 20' Wind Speed
- Temperature
- 100-Hour Fuel Moisture

# Years to Remember: 2018 2020



# Fuel Model: Z - Slash/Blowdown (2016)

# Remember what Fire Danger tells you:

- ✓ Energy Release Component gives seasonal trends calculated from temperature, humidity, daily temperature & rh ranges, and precip duration.
- ✓ Wind is NOT part of ERC calculation.
- ✓ Watch local conditions and variations across the landscape -- Fuel, weather, Topography.
- ✓ Listen to weather forecasts -- especially WIND.

# Past Experience:

(DW:LQ(YHUV RBDQ BXKJWHPSORZELWERRRFRYHU  
 DSLGGUORIMOVHDMZLQDQJWSHHGDGLWDELOLW  
 DLQRBDQHDGWRDSLGLHSHDG  
 /LFKQDSHGIMOEZHFRRPHDYDLODEOH BDEBHDVQ  
 FDRSILH OLNHOLRRR)